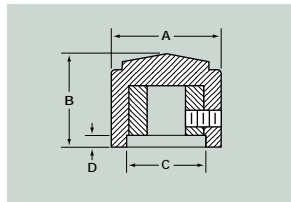




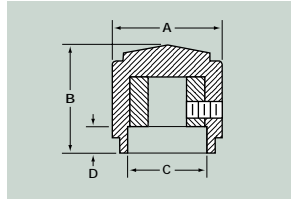
Round



Part Number		NUT CLEARANCE		TO COMPLETE PART NUMBER						
MS91528	White Dot	A Diam.	B Height	C Diam.	D Depth	Style	Shaft Hole	Color	Suffix	
0N	0C	.500	.510	.435	.026	N	1	B	-	
1N	1C	.700	.610	.485	.026		C	2	S	
2N	2C	.900	.790	.640	.114			3	G	
3N	3C	1.250	.700	.750	.114			4	J	
4N	4C	1.750	.850	.750	.114					
5N	5C	2.250	.875	.750	.114					



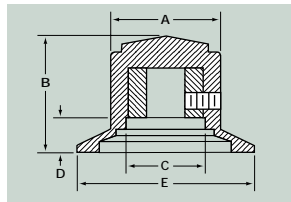
Skirted Round



Part Number		NUT CLEARANCE		TO COMPLETE PART NUMBER						
MS91528	White Dot	A Diam.	B Height	C Diam.	D Depth	Style	Shaft Hole	Color	Suffix	
0D	0E	.500	.655	.300	.177	D	1	B	-	
1D	1E	.700	.782	.485	.188		E	2	S	
2D	2E	.900	1.010	.640	.320			3	G	
3D	3E	1.250	.850	.750	.250			4	J	
4D	4E	1.750	1.070	.750	.320					
5D	5E	2.250	1.095	.750	.320					



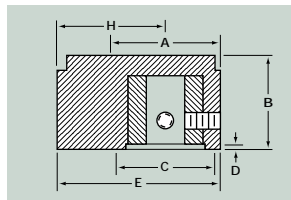
Dial



Part Number		NUT CLEARANCE			TO COMPLETE PART NUMBER								
MS91528	Plain with Arrow	Plain	Dial	A Diam.	B Height	C Diam.	D Depth	E Width	Style	Shaft Hole	Color	Suffix	
0F	0G			.500	.655	.300	.177	.900	F	1	B	-	
1F	1G			.700	.782	.485	.188	1.150		G	2	S	
2F	2G			.900	1.010	.640	.320	1.500			3	G	
3F	3G			1.250	.850	.750	.250	1.837			4	J	
4F	4G			1.750	1.070	.750	.320	2.468					
5F	5G			2.250	1.095	.750	.320	3.020					



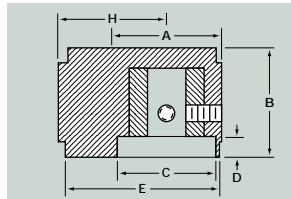
Pointer



Part Number		NUT CLEARANCE				TO COMPLETE PART NUMBER					
MS91528		A Diam.	B Height	C Diam.	D Depth	E Length	H Swing	Style	Shaft Hole	Color	Suffix
0P		.500	.510	.420	.026	.740	.490	P	1	B	-
1P		.700	.610	.485	.026	1.030	.680		2	S	
2P		.900	.790	.640	.114	1.335	.885		3	G	
									4	J	



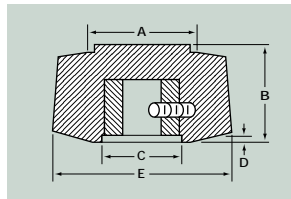
Skirted Pointer



Part Number		NUT CLEARANCE				TO COMPLETE PART NUMBER					
MS91528		A Diam.	B Height	C Diam.	D Depth	E Length	H Swing	Style	Shaft Hole	Color	Suffix
0K		.500	.655	.300	.177	.740	.490	K	1	B	-
1K		.700	.782	.485	.188	1.030	.680		2	S	
2K		.900	1.010	.640	.320	1.335	.885		3	G	
									4	J	



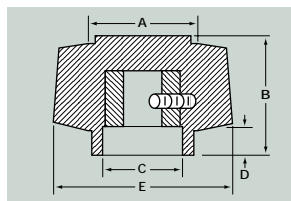
Double Bar



Part Number		NUT CLEARANCE			TO COMPLETE PART NUMBER					
MS91528		A Diam.	B Height	C Diam.	D Depth	E Width	Style	Shaft Hole	Color	Suffix
1GG		.700	.610	.485	.026	1.150	GG	1	B	-
								2	G	
								3		
								4		



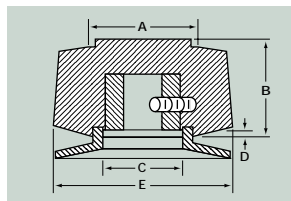
Skirted Double Bar



Part Number		NUT CLEARANCE			TO COMPLETE PART NUMBER					
MS91528		A Diam.	B Height	C Diam.	D Depth	E Width	Style	Shaft Hole	Color	Suffix
1HH		.700	.782	.485	.188	1.150	HH	1	B	-
								2	G	
								3		
								4		



Double Bar w/Dial



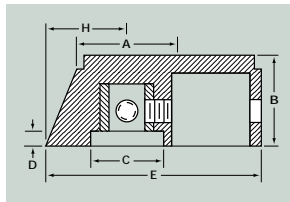
Part Number		NUT CLEARANCE			TO COMPLETE PART NUMBER					
MS91528		A Diam.	B Height	C Diam.	D Depth	E Width	Style	Shaft Hole	Color	Suffix
1II		.700	.782	.485	.188	1.150	II	1	B	-
								2	G	
								3		
								4		

REFER TO ORDERING GUIDE ON PAGE 35 FOR STYLE, SHAFT HOLE SPECIFICATIONS AND COLOR.





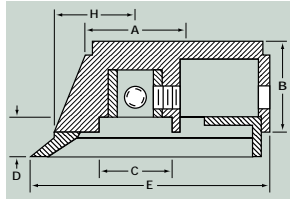
Bar



Part Number	NUT CLEARANCE						TO COMPLETE PART NUMBER			
	A Diam.	B Height	C Diam.	D Depth	E Length	H Swing	Style	Shaft Hole	Color	Suffix
MS91528							A	2	B	-
1A__	.700	.645	.515	.110	1.515	.575		4	S	G
									J	



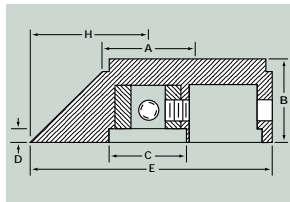
Bar w/Dial



Part Number	NUT CLEARANCE						TO COMPLETE PART NUMBER			
	A Diam.	B Height	C Diam.	D Depth	E Length	H Swing	Style	Shaft Hole	Color	Suffix
MS91528							B	2	B	-
1B__	.700	.815	.515	.266	1.720	.780		4	S	G
									J	



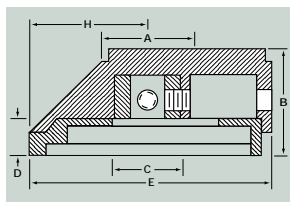
Anti-Parallel Bar



Part Number	NUT CLEARANCE						TO COMPLETE PART NUMBER			
	A Diam.	B Height	C Diam.	D Depth	E Length	H Swing	Style	Shaft Hole	Color	Suffix
MS91528							L	2	B	-
2L__	.700	.645	.595	.110	1.855	.900		4	S	G
									J	



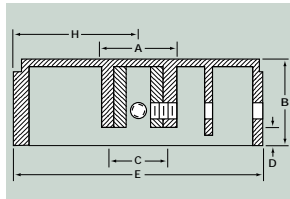
Anti-Parallel Bar w/Dial



Part Number	NUT CLEARANCE						TO COMPLETE PART NUMBER			
	A Diam.	B Height	C Diam.	D Depth	E Length	H Swing	Style	Shaft Hole	Color	Suffix
MS91528							M	2	B	-
2M__	.700	.815	.470	.266	1.870	.915		4	S	G
									J	



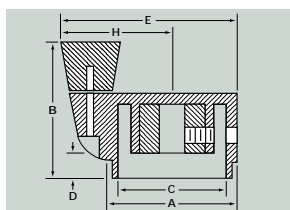
Long Bar



Part Number	NUT CLEARANCE						TO COMPLETE PART NUMBER			
	A Diam.	B Height	C Diam.	D Depth	E Length	H Swing	Style	Shaft Hole	Color	Suffix
MS91528							R	2	B	-
3R__	.788	.869	.562	.177	2.552	1.290		4	S	G
									J	



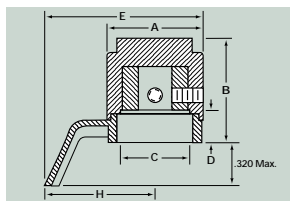
Spinner



Part Number	NUT CLEARANCE						TO COMPLETE PART NUMBER			
	A Diam.	B Height	C Diam.	D Depth	E Width	H Swing	Style	Shaft Hole	Color	Suffix
MS91528							S	2	B	-
3S__	1.250	1.350	.685	.250	1.715	1.090		4	S	-
4S__	1.750	1.758	.685	.320	2.359	1.484			G	-
5S__	2.250	1.782	.685	.320	2.859	1.734			J	-



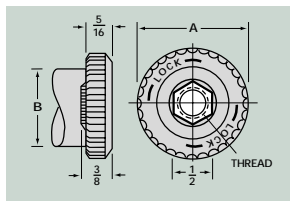
Knob Lock Pointer



Part Number	NUT CLEARANCE						TO COMPLETE PART NUMBER			
	A Diam.	B Height	C Diam.	D Depth	E Width	H Swing	Style	Shaft Hole	Color	Suffix
MS91528							AA	1	B	-
1AA__	.700	.782	.560	.188	1.162	.812		2	S	-
2AA__	.900	.958	.640	.188	1.418	.968		3	G	-
3AA__	1.250	.862	.750	.188	1.750	1.125		4	J	-



Knob Lock



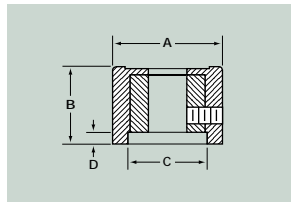
Part Number	NUT CLEARANCE		TO COMPLETE PART NUMBER	
	Splash Proof	A Diam.	B* Diam.	Style
MS91528				
1CC__	1DD__	1.030	.721	CC
2CC__	2DD__	1.340	.928	DD
3CC__	3DD__	2.250	1.269	

THREAD SIZE: 1— 1/4-32
2— 3/8-32

*Maximum knob diameter with which a knob lock will function as a lock.

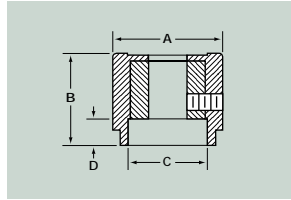
See our mechanical section on page 26 for details on our (KS series) locking mechanism.





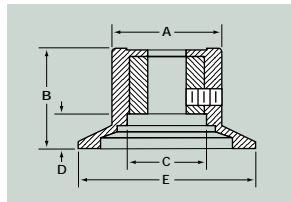
Part Number	NUT CLEARANCE		TO COMPLETE PART NUMBER	
	A Diam.	B Height	C Diam.	D Depth
MS91528				
1N__C	.700	.510	.485	.026
2N__C	.900	.655	.640	.114
3N__C	1.250	.530	.750	.114

Style	Shaft Hole	Color	Suffix
N	2	B	C
	4	S	
		G	
		J	



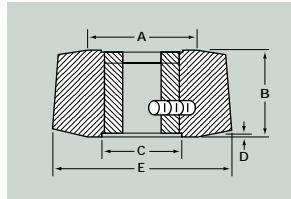
Part Number	NUT CLEARANCE		TO COMPLETE PART NUMBER	
	A Diam.	B Height	C Diam.	D Depth
MS91528				
1D__C	.700	.690	.485	.188
2D__C	.900	.885	.640	.320
3D__C	1.250	.700	.750	.250

Style	Shaft Hole	Color	Suffix
D	2	B	C
	4	S	
		G	
		J	



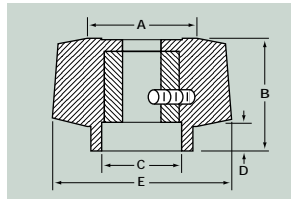
Part Number	NUT CLEARANCE		TO COMPLETE PART NUMBER	
	A Diam.	B Height	C Diam.	D Depth
MS91528				
1G__C	.700	.690	.485	.188
2G__C	.900	.885	.640	.320
3G__C	1.250	.700	.750	.250

Style	Shaft Hole	Color	Suffix
G	2	B	C
F	4	S	
		G	
		J	



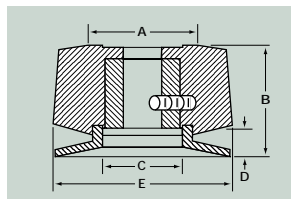
Part Number	NUT CLEARANCE		TO COMPLETE PART NUMBER	
	A Diam.	B Height	C Diam.	D Depth
MS91528				
1GG__C	.700	.510	.485	.026

Style	Shaft Hole	Color	Suffix
GG	2	B	C
JJ	4	S	
SS		G	
		J	



Part Number	NUT CLEARANCE		TO COMPLETE PART NUMBER	
	A Diam.	B Height	C Diam.	D Depth
MS91528				
1HH__C	.700	.690	.485	.188

Style	Shaft Hole	Color	Suffix
HH	2	B	C
	4	S	
		G	
		J	



Part Number	NUT CLEARANCE		TO COMPLETE PART NUMBER	
	A Diam.	B Height	C Diam.	D Depth
MS91528				
1II__C	.700	.690	.485	.188

Style	Shaft Hole	Color	Suffix
II	2	B	C
	4	S	
		G	
		J	

REFER TO ORDERING GUIDE ON PAGE 35 FOR STYLE, SHAFT HOLE SPECIFICATIONS AND COLORS.

Knob Locks

See our mechanical section on page 24 for details on our (KL series) locking mechanism.



Tactile Shapes These tactile-shaped and colored tops can be combined with all knob styles except bar pointer. Available in Black or Gray with colored top; Matte finish.



Form 1
Intensity
Blue



Form 2
Tune
Orange



Form 3
Dimmer
White



Form 4
Gain
Red



Form 5
Focus
Violet



Form 6
Range
Yellow



Form 7
Range
Yellow



Standard Tactile Cap	Diameter	Round	Skirted Round	Dial	Pointer	Skirted Pointer
FORM 1	70	1N__1	1D__1	1F__1	-	-
Intensity-Blue	90	2N__1	2D__1	2F__1	-	-
	125	3N__1	3D__1	3F__1	-	-
	70	1N__2	1D__2	1F__2	-	-
FORM 2 Tune-Orange	90	2N__2	2D__2	2F__2	-	-
	125	3N__2	3D__2	3F__2	-	-
	70	1N__3	1D__3	1F__3	-	-
FORM 3 Dimmer-White	90	2N__3	2D__3	2F__3	-	-
	125	3N__3	3D__3	3F__3	-	-
	70	1N__4	1D__4	1F__4	-	-
FORM 4 Gain-Red	90	2N__4	2D__4	2F__4	-	-
	125	3N__4	3D__4	3F__4	-	-
	70	1N__5	1D__5	1F__5	-	-
FORM 5 Focus-Violet	90	2N__5	2D__5	2F__5	-	-
	125	3N__5	3D__5	3F__5	-	-
	70	1N__6	1D__6	1F__6	-	-
FORM 6 (ROUND) Range-Yellow	90	2N__6	2D__6	2F__6	-	-
	125	3N__6	3D__6	3F__6	-	-
	70	-	-	-	1P__7	1K__7
FORM 7 (POINTER) Range-Yellow	90	-	-	-	2P__7	2K__7

Spinner Handles



Form 8
Marker
Green



Form 9
Bearing
Gray

Standard Tactile Cap	Series	Crank
FORM 8	125	3S__8
Marker-Green	175	4S__8
	225	5S__8
	125	3S__9
FORM 9 Bearing-Gray	175	4S__9
	225	5S__9

ORDERING GUIDE FOR MILITARY SERIES

Cap Design	Diam.	Style		Shaft Hole	Color	Suffix
Indicate Part No. from Tables Above	0 = .500	N - Round	A - Bar	1 - 1/8" Round	B - Matte Black	C = Concentric Tactiles: 1 - Blue 2 - Orange 3 - White 4 - Red 5 - Violet 6 - Yellow 7 - Yellow 8 - Green 9 - Grey
	1 = .700	D - Skirted Round	B - Bar w/Dial	2 - 1/4" Round	S - Gloss Black	
	2 = .900	F - Dial	L - Anti-Parallax Bar	3 - 1/2" "D" Hole	G - Matte Gray	
	3 = 1.250	P - Pointer	M - Anti-Parallax Bar w/Dial	4 - 3/4" "D" Hole	J - Gloss Gray	
	4 = 1.750	K - Skirted Ptr. w/Dial	R - Long Bar	5 - .190 Round		
	5 = 2.250	GG - Dbl. Bar	S - Spinner	6 - .267 Round		
		HH - Skt. Dbl. Bar		7 - .378 Round		
		II - Skt. Dbl. Bar w/Dial				

SET SCREW SPECIFICATIONS

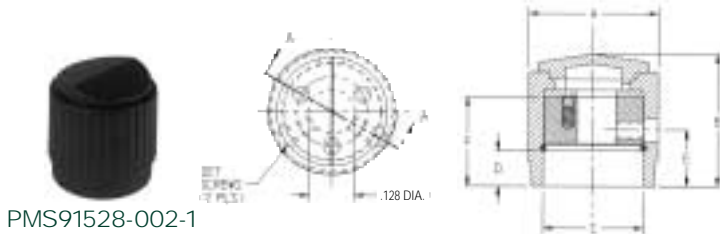
Series	Each Knob Furnished with (2) Set Screws	
	1/8" Shaft Hole	1/4" Shaft Hole
0	4-40 UNC-3A	4-40 UNC-3A
1	4-40 UNC-3A	4-40 UNC-3A
2	4-40 UNC-3A	8-32 UNC-3A
3		8-32 UNC-3A
4		8-32 UNC-3A

TOLERANCES

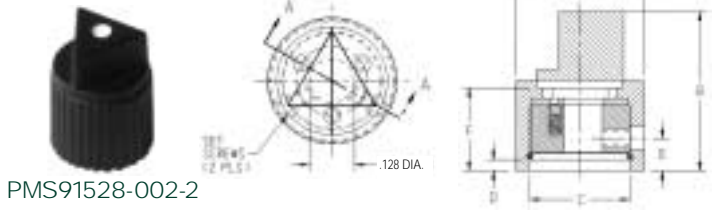
A	B	C	D	E
+ .030	± .030	Min.	Min.	Max.

	Diameter	Style	Shaft Hole	Color	Suffix
EXAMPLE: MS91528-1N2B2	.700	Round	.250"	Matte Black	Tactile Top
91528-	1	N	2	B	2





PMS91528-002-1

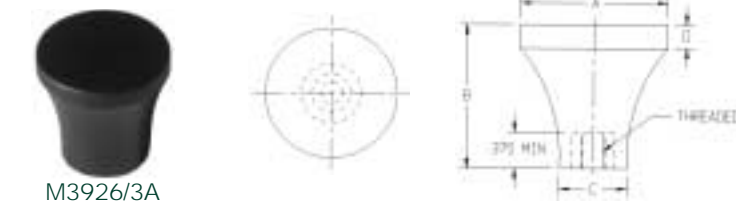


PMS91528-002-2

Series Number

Series Number	A Base Diam.	B Height	C Diam. Nut Clearance	D Height Nut Clearance	E	F
1	0.500	0.655	0.300	0.177	.0325	0.470
2	0.500	0.793	0.359	0.026	.0158	0.560

Knob clutch and slip torque.
Range 11-24 inch-ounces



M3926/3A

Series Number

Series Number	A Diameter ± .016	B Height ± .031	C ± .016	D ± .016
0	0.750	0.750	0.500	0.094
2	1.000	1.000	0.562	0.125
4	1.500	1.500	0.688	0.250

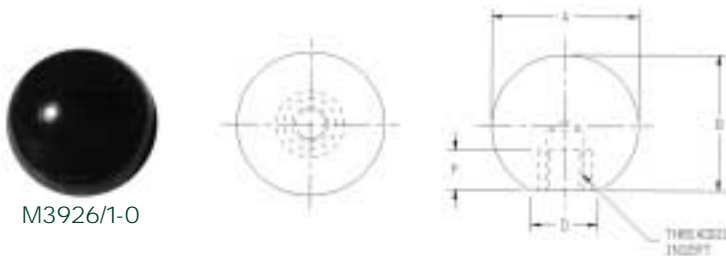
Knob, control, tapered

ORDERING GUIDE FOR MIL-K 3926 SERIES

Series	Thread		Material 1	Material 2	Color
	UNC-2B	UNF-2B	Plastic	Plastic w/insert	
0	A-.1640-32	B-.1900-32	A, B	-	B- Black
2	E-.2500-20	C-.2500-28	A, B, C, D, E	A, B, C, E	R- Red
4	F-.3125-18	D-.3750-24	C, D, E, F, G	C, D, E, F, G	G- Gray
	G-.3750-16				O- Olive Drab
	H-.4375-14				

EXAMPLE: M3926/3-3B2B

	Series	Thread	Material	Color
	.750	.1900-32		
M3926/3-	3	B	2	B



M3926/1-0

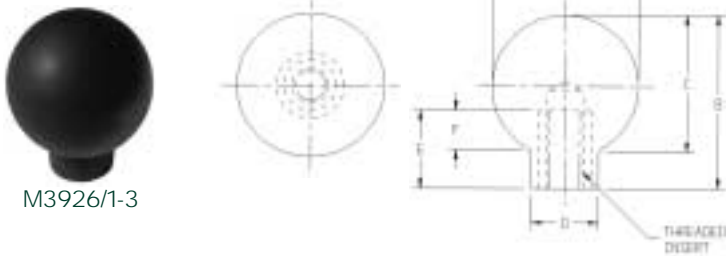
Series Number

Series Number	A ± .016	B ± .031	C ± .016	D ± .016	E	F
0	3/4	-	45/64	-	-	7/16
3	1-1/2	1-13/16	-	11/16	13/16	-

Knob, control, ball

ORDERING GUIDE FOR MIL-K 3926 SERIES

Series	Thread		Material	Color
	UNC-2B	UNF-2B	1- Plastic	2- Plastic w/insert
0	A-.1640-32	B-.1900-32	1- Plastic	B- Black
3	E-.2500-20	C-.2500-28	2- Plastic w/insert	R- Red
	F-.3125-18	D-.3750-24		G- Gray
	G-.3750-16			O- Olive Drab
	H-.4375-14			



M3926/1-3

EXAMPLE: M3926/1-0A1B

	Series	Thread	Material	Color
	.700	.1640-32		
M3926/1-	0	A	1	B

